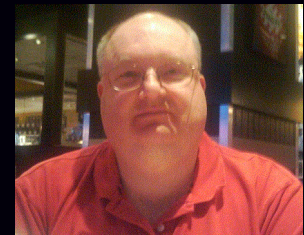


Windows 10 Update v2.0

Scott Quimby

January 2017



\$189 Windows 10 Laptops



Microsoft announced at the BETT conference in London that Windows 10 PCs are available today from:

- Acer
- HP
- Lenovo

Features

- Windows Ink
- Touch screen support



Windows 10 Marketshare



- **Windows 10 – 24+%**
- **Windows 7 – 48+%**
 - Commentary that most of that is overseas



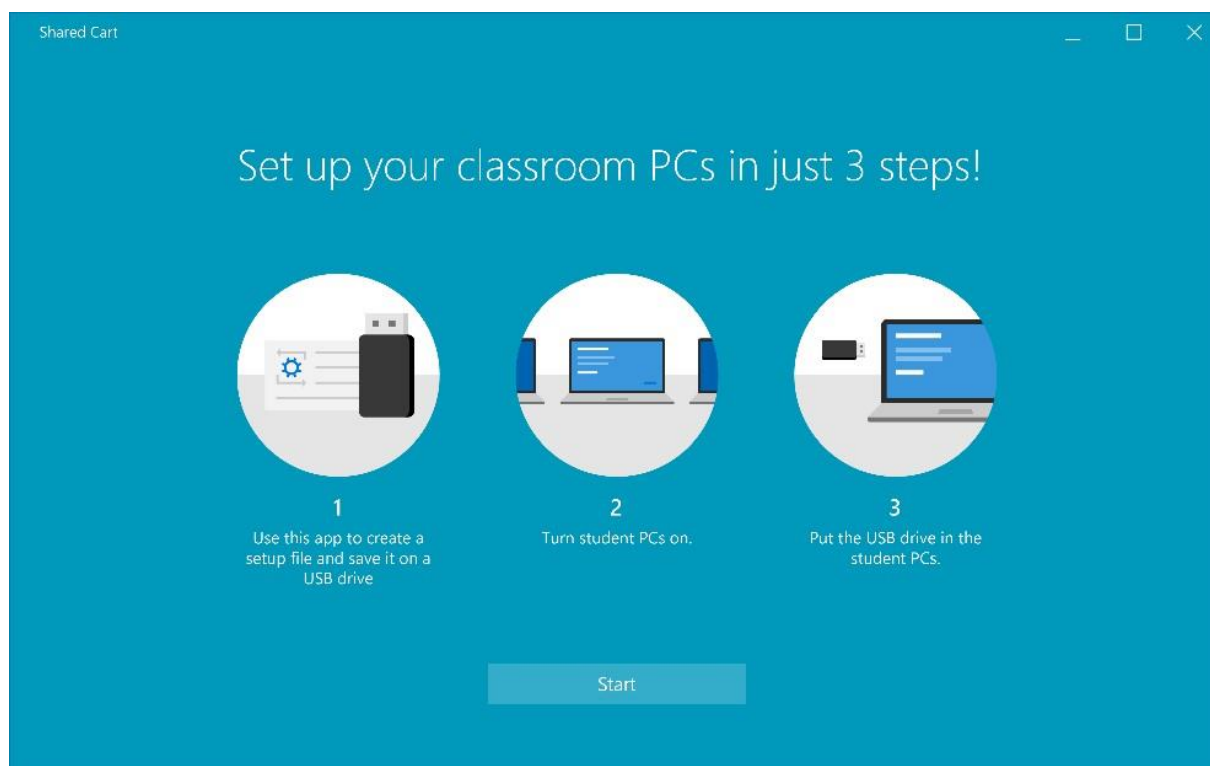
Windows 10 Anniversary Update



- **Microsoft has published Windows 10 Anniversary Update to current branch for business.**
- **Version 14393.447**
- **Follows the 6 month delay on consumer updates**



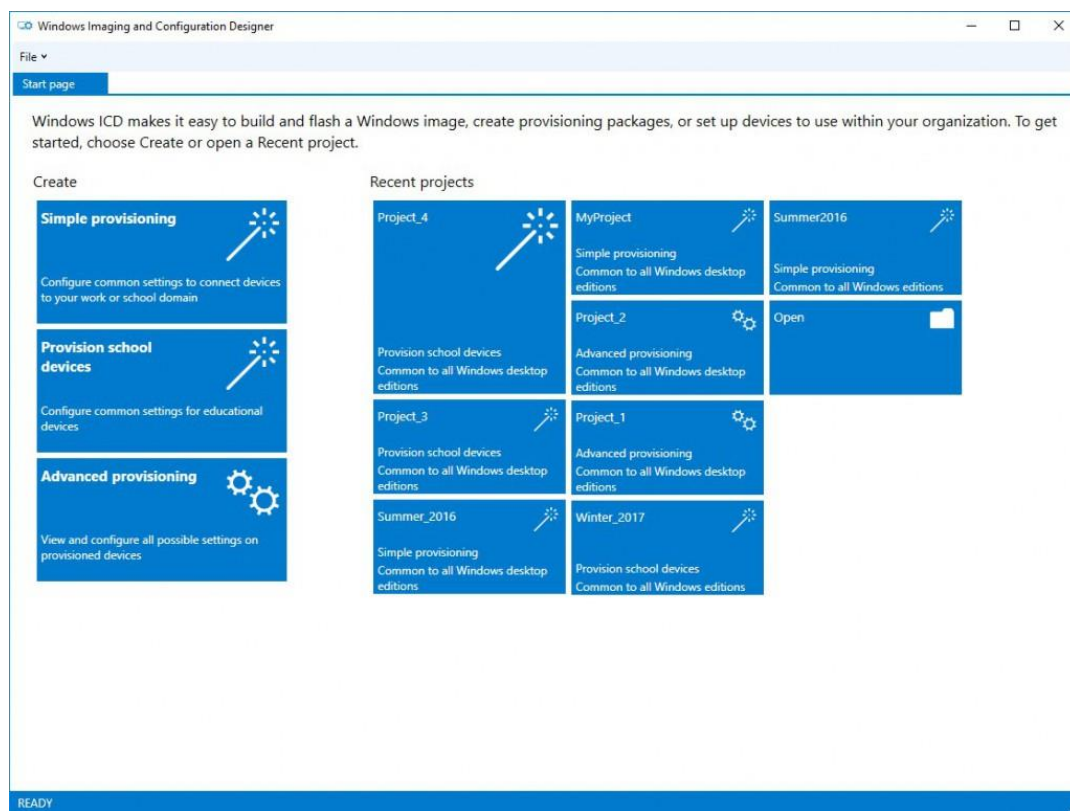
■ Set up School PCs app for shared Shared Cart of devices in schools.



Windows 10 Anniversary - Education



Updated Windows Imaging and Configuration Designer Tool for IT Staff



Windows 10 Anniversary - Education



- **Take a test App**
- **Windows Update Improvements**
 - Active hour policies to update outside of classroom times
- **Education ready Windows Store for teachers.**
- **Integration with Microsoft Classroom and OneNote**
- **Minecraft: Education Edition for Windows 10.**
 - Free download on Windows 10 for Education



Windows 10 Forced Update



- **Original Windows 10 10240 / 1507 now at build 10240.17236**
- **Fall Update 1511 renamed November Update now at 10586.753**
- **Anniversary Update 1607 now at 14393.693**
- **Creators Update will be 1704**
- **Since Anniversary Update is now “current branch, Microsoft unilaterally ignored any “deferred” or “hidden” update settings and pushed the Anniversary Update down without warning.**



Windows 10 EOL Philosophy



- Since Windows 10 is an evolving product, they have an EOL philosophy

Windows 10 current versions by servicing option

Servicing option	Version	OS build	Availability date	Latest revision date
Current Branch (CB)	1607	14393.693	8/2/2016	1/10/2017
Current Branch (CB)	1511	10586.753	11/12/2015	1/10/2017
Current Branch (CB)	1507 (RTM)	10240.17236	7/29/2015	1/10/2017
Current Branch for Business (CBB)	1607	14393.693	11/29/2016	1/10/2017
Current Branch for Business (CBB)	1511	10586.753	4/8/2016	1/10/2017
Current Branch for Business (CBB)	1507 (RTM)	10240.17236	7/29/2015	1/10/2017
Long-Term Servicing Branch (LTSB)	1607	14393.693	8/2/2016	1/10/2017
Long-Term Servicing Branch (LTSB)	1507 (RTM)	10240.17236	7/29/2015	1/10/2017

Microsoft recommends



Windows 10 EOL Philosophy



- **18 Months after the version is released (i.e. Current Branch)**
- **60 days after the next version is published for download.**
- **This will happen again for the Creators Update**
 - http://www.infoworld.com/article/3160527/microsoft-windows/why-microsoft-forced-windows-10-upgrades-last-friday.html?idg_eid=73261dcec9d3d8b52c7344e7a5e2afc1&utm_source=Sailthru&utm_medium=email&utm_campaign=InfoWorld%20Daily:%20Afternoon%20Edition%202017-01-23&utm_term=infoworld_daily



I Rumored March/April arrival

- Updates to Windows Security Center
- Windows Defender Advanced Threat Protection (ATP)
 - Detection sensors for things only in memory or in the kernel
 - Better data collection
 - Remediation tools
- Cloud Based Analytics
- Convert to UEFI from Legacy in-place (integrated into SCCM)
- Improved MDM



3D in Windows 10

- 3D Printing, 3D creating, 3D virtual/augmented reality
- Windows Paint 3D!
- Gamer broadcasting
- 4K gaming
- Remix3D – 3D content
- Other Skype variants



- **Build 14791 shows that Microsoft is replacing the DOS CMD.EXE prompt with PowerShell.**
- **You can undo this by selecting:**
 - Settings, Personalization, Taskbar, Turn Replace Command Prompt with Windows PowerShell off.



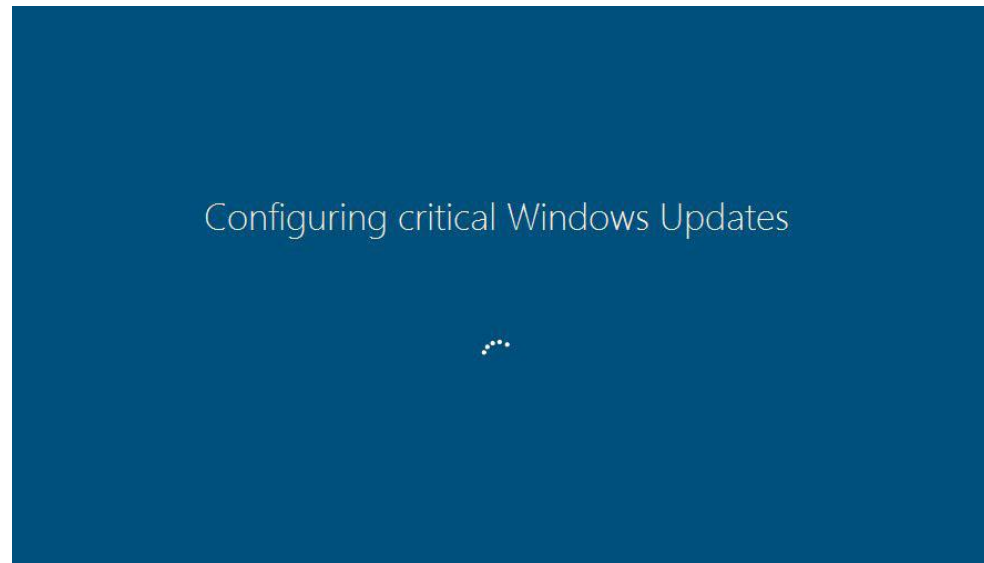
- | If you want to manage Windows 10 group policies you must have in place one of two options:**
 - Windows Server 2016
 - Windows 10 workstation with RSAT installed.
- | Otherwise you will have issues with various aspects of Windows 10 specific GPOs such as .NET failures in Item Level Targeting.**



Windows 10 Ransomware



- Looks like Windows update.
- You think you are waiting for updates to finish while it is encrypting all your files.



Easy to bypass Windows 10 BitLocker



- The BitLocker feature of Windows is supposed to offer a degree of peace of mind that files are going to be secure -- but one expert points out that a simple key combo is all it takes to bypass the security feature.
 - <http://betanews.com/2016/11/30/windows-10-bypass-bitlocker/>
 - Bug to be fixed in a future release.



Windows Hello Devices



- **Nymi Band**
 - **YubiKey**
 - **RSA SecureID Access Authenticator**
 - **HID Global Seos card**
- Source: <http://www.techrepublic.com/article/4-windows-hello-devices-that-will-change-the-way-you-log-into-your-pc/?ftag=TRE001a825&bhid=23206304>

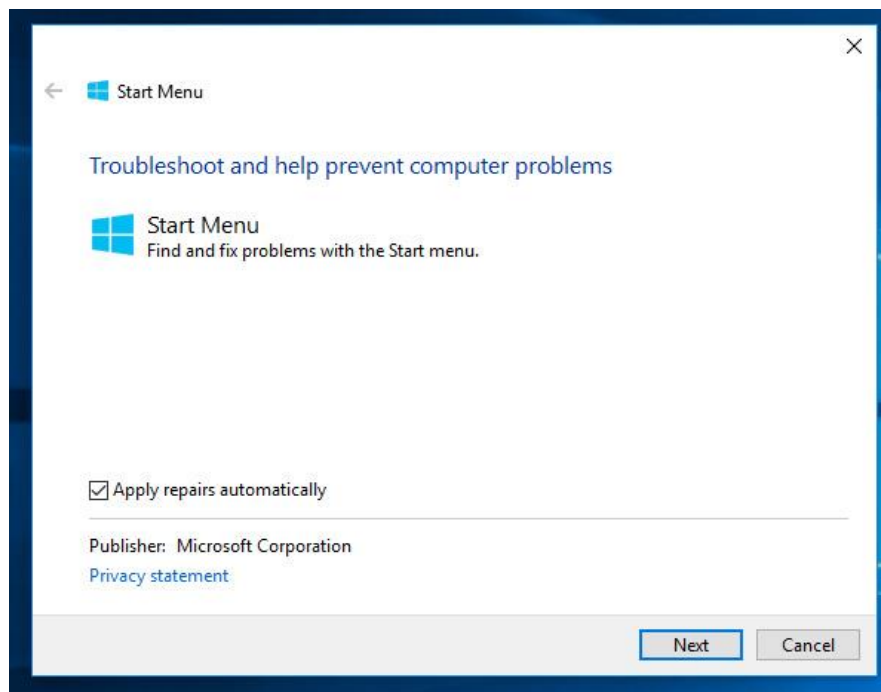


Windows 10 Troubleshooting Tools

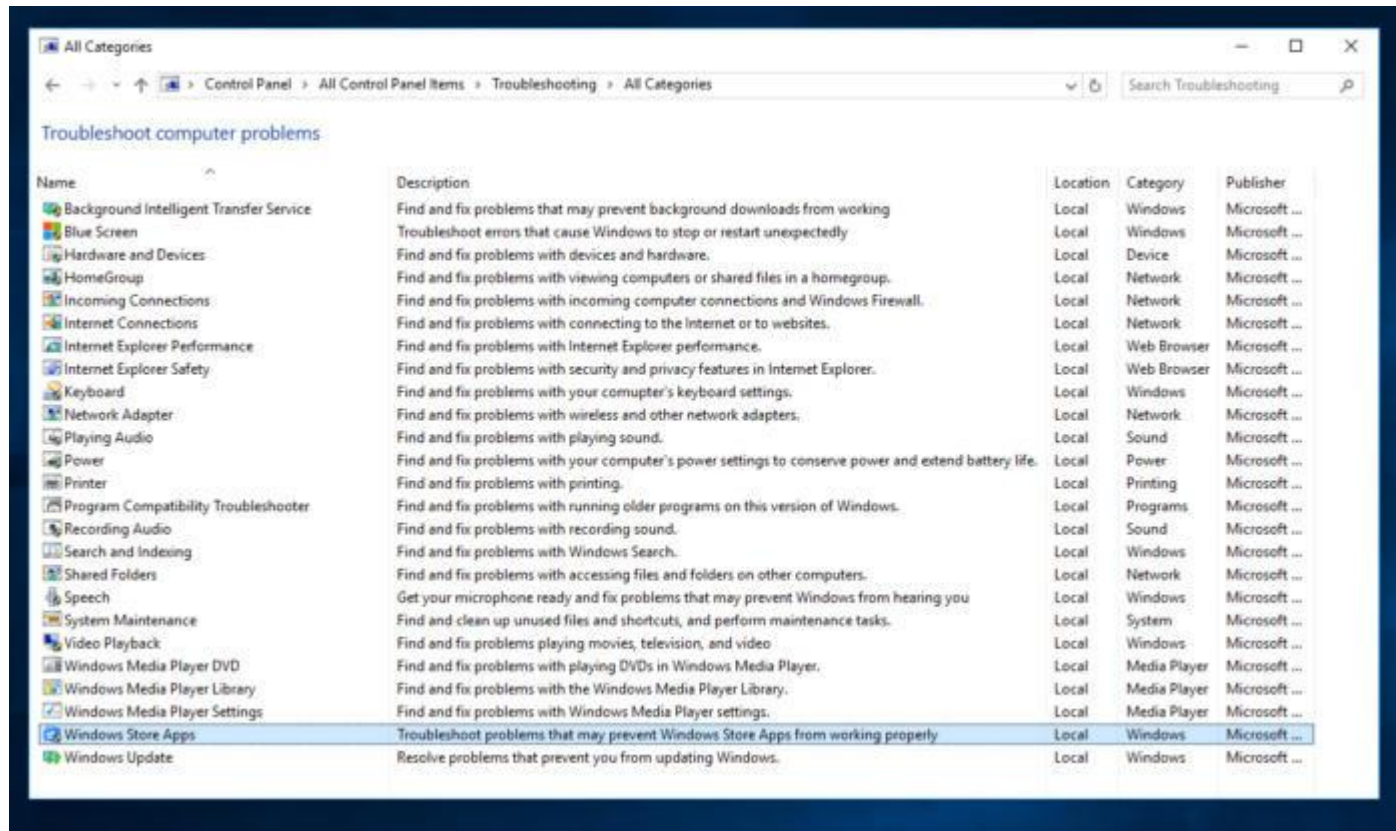


Start Menu or Cortina issues

- <https://support.microsoft.com/en-us/help/12385/windows-10-troubleshoot-problems-opening-start-menu-cortana>



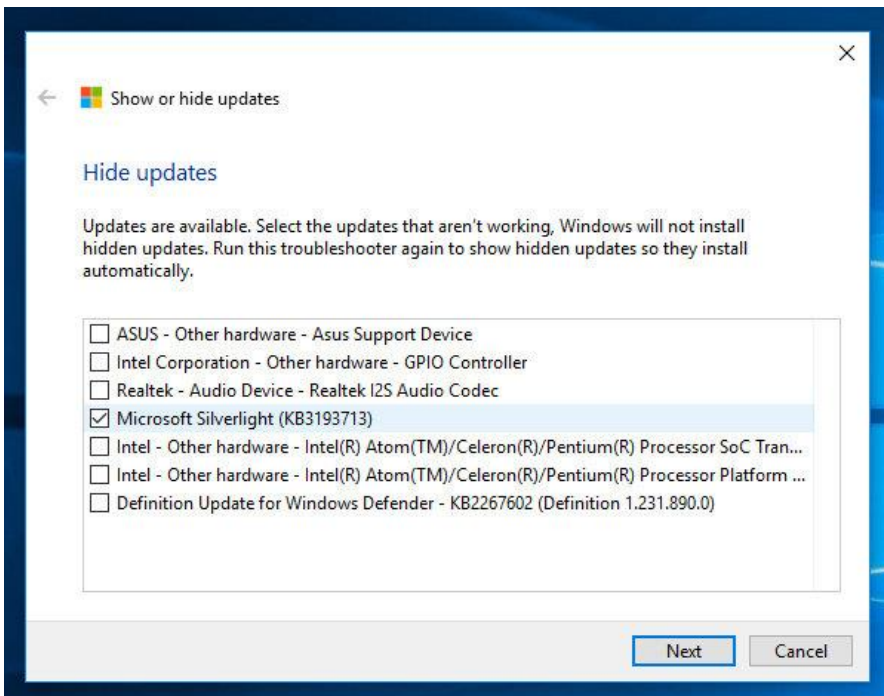
Built-in troubleshooters



Show / Hide Windows 10 Updates



■ <https://support.microsoft.com/en-us/help/3073930/how-to-temporarily-prevent-a-driver-update-from-reinstalling-in-windows-10>



- | Problems and complexity trying to make UE-V work with Windows 10 1607**



Windows 10 Update Changes



- **Unified Update Platform designed to make it easier to upgrade from one version to the next.**
- **Shrink update sizes and streamline process.**
 - Estimated 35% smaller.
- **Users only download the parts of Windows that has changed between Windows 10 versions instead of a new version of Windows 10.**



Windows 10 Privacy



- **Don't use Cortina**
- **Don't use Edge**
- **Don't use OneDrive**
- **Uninstall default apps with Ccleaner**
- **Don't sign into Microsoft on-line**
- **Change privacy options under settings**
- **Stop getting to know me setting**
- **Block diagnostic and feedback**
- **Turn off background apps**
- **Say no to syncing**
- **Say no to Windows Spotlight**
- **Don't share updates**
- **Disable device location tracking**
 - Source: <http://www.infoworld.com/article/3136740/privacy/the-paranoid-users-guide-to-windows-10-privacy.html>



■ Wipe And Reload

- This is the same process we have seen since Windows 7. You boot up with an O/S that is independent of what is currently on the system drive which allows you to apply a WIM. With Windows 10, the trick here is making sure that the reference image is configured correctly before capturing the WIM. Otherwise you will get unusual behavior after applying the O/S. Reports from the field are updates not applying, GPOs not behaving properly, unable to install apps etc.
- To properly create a Windows 10 WIM, you need to minimally use the Microsoft Deployment Toolkit which is free. Once you have the WIM created you can use whatever method, WDS, SCCM, ImageX etc to deploy it. If you have SCCM, you can skip using MDT to create the image. However, I still would use it because it is so much simpler after seeing both methods. The official steps are listed here.
 - <https://technet.microsoft.com/en-us/itpro/windows/deploy/create-a-windows-10-reference-image>.

I Reset

- The idea of a system reset is similar to see we do with mobile devices. You don't boot up an iPhone with media to wipe all the user data from it and then have it set to a default mode. You select the reset option inside the O/S and it does its thing. You can do the same thing with Windows 10 and Microsoft is saying this is their preferred method of imaging machines. The beauty of this is that you don't need to have an imaging infrastructure in place. You can guide a user who is working remotely through the process. If you are properly applying the servicing updates to the computer, then the image itself is also update.



■ Provisioning

- This is another new feature with Windows 10. It has always been a lot of work to keep MDT and SCCM up to date with drivers. You also have to depend on the manufacturer to provide you with imaging friendly drivers. When you pull a new machine out of the box, it already has all the drivers required for the system to function. You can use the Windows Imaging and Configuration Designer (ICD) to create a provisioning package. This package has just enough instructions to get the system managed by an MDM, SCCM or GPO. Then the management policies can take over installing software to prepare the machine for the end user. So a basic provisioning package may just join the machine to the domain.
- The way that you apply a provisioning package is turn the new computer on, wait for the Out of Box Experience (OOBE) to start then press the Windows key 5 times very quickly. The package needs to be on the media root of a USB drive or SD card. You can then select the provisioning package to apply to the system. Supposedly there is a way to host the packages on a file share but I did not get a chance to test that out.
 - [https://msdn.microsoft.com/en-us/library/windows/hardware/dn916113\(v=vs.85\).aspx](https://msdn.microsoft.com/en-us/library/windows/hardware/dn916113(v=vs.85).aspx)



csiny.com